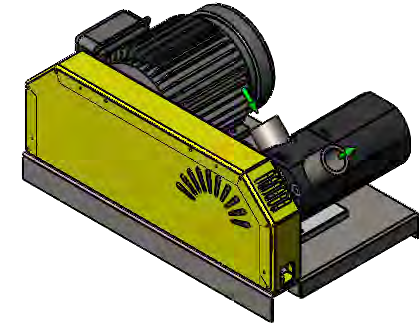


BearCat Pumps

F-Pump Manual, 2023



Index (Click link for quick access)

General Operation:

- 1-1 [Safety Precautions](#)
- 1-2 [Start-up and Relief Valve](#)
- 1-3 [Flow Speed Control](#)

Parts & Kits:

- 3-1 [Parts Diagram](#)
- 3-2 [Shaft Seal Kits](#)
- 3-3 [Rebuild Kits](#)
- 3-4 [Rebuild, Bushing Removal](#)

Curves:

- 5-1 [04-07 Curves](#)
- 5-2 [15-30 Curves](#)

Model & Features Guide:

- 2-1 [Model Number \(all pumps\)](#)
- 2-2 [Option Selection](#)
- 2-3 [Motor Configurations](#)
- 2-4 [Screen Box/Priming Chamber](#)

Mount & Skid Dimensions:

- 4-1 [Base Mount, F_Pump Dimensions](#)
- 4-2 [Face Mount, F_Pump Dimensions](#)
- 4-3 [Belt Drive Skid Dimensions](#)
- 4-4 [Vertical Stand Dimensions](#)
- 4-5 [Direct Couple Skid Dimensions](#)

Example Systems & Misc:

- 6-1 [Meter Assemblies](#)
- 6-2 [Accessories](#)

General Safety Precautions

- This manual should be read entirely prior to the commencement of installation and operation.
- Only qualified personnel should install, operate and maintain this pump and associated equipment.
- Check pump for specific safety warnings/labels.
- Prior to start-up, ensure complete cleanliness and integrity of the system in which the pump is installed.
- In most cases the relief valve is factory set during performance test. In cases where the type of duty is not known (such as distributors or stock orders) or where the components containing the relief valve come from pre-tested stock batches, it is not possible to factory set the relief valve. In this case it is the installer's responsibility to set the relief valve in accordance with the specific application.
- Pumps with heat tracing or jacketing necessary to prevent solidification of the product should be brought up to working temperature prior to start-up.
- All electrical work must be done in accordance with the manufacturers recommended procedures by qualified personnel.
- Ensure all guards are securely in place before operating the equipment. Do not remove guards at any time during operation.
- For pumps operating under 'flooded' suction, when venting the pump through a plug or valve, care should be taken not to completely remove vent plugs or completely open any vent as this could result in liquid being discharged from the openings under pressure.
- Prior to start-up, ensure that the system valves and associated equipment are correctly set.
- Wear appropriate safety attire including long sleeves, face shield, and gloves, whenever starting or operating the pump.

Start-up and Relief Valve

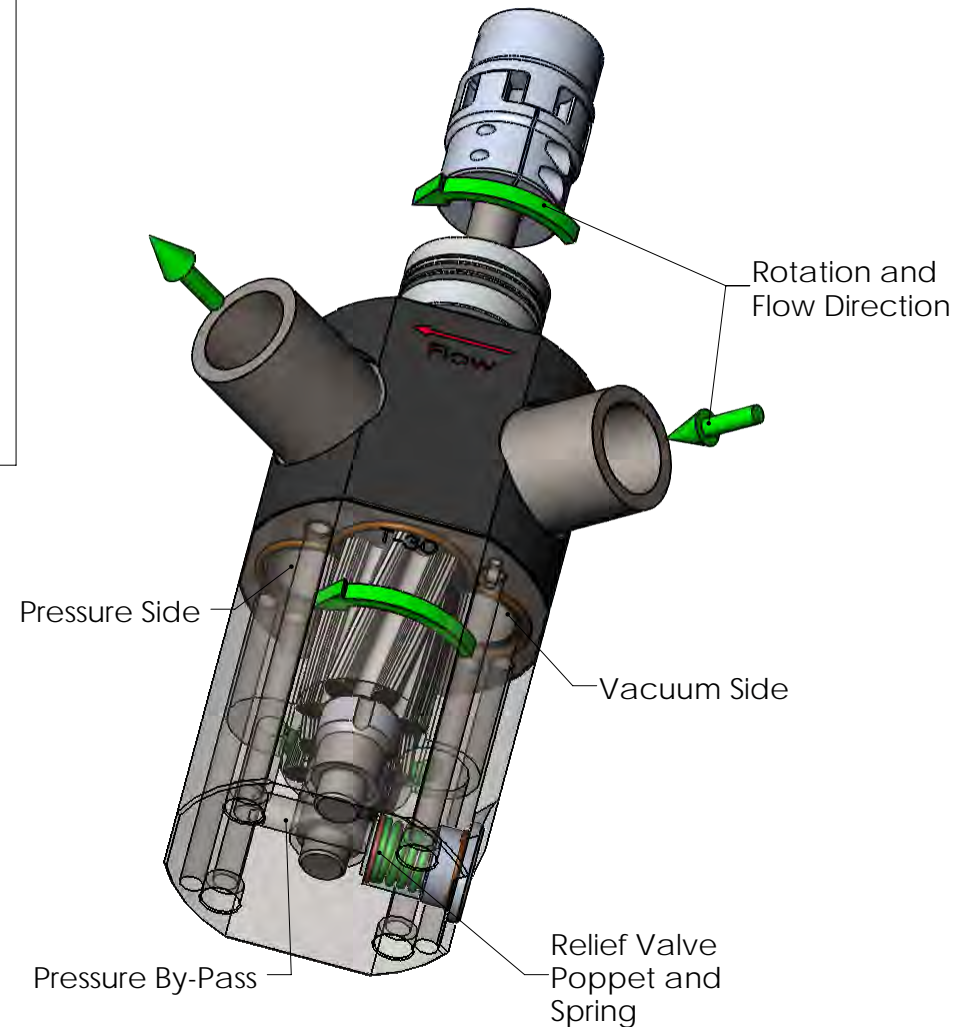
Start-up Procedure

1. Pump should turn freely by hand. Ensure all guards are in place.
2. Gradually open valves, and check for signs of leakage before starting pump.
3. If possible, add some of the liquid directly to the pump. This helps lubricate and prime during the first start-up.
4. Check the rotation by flicking starter 'ON' then 'OFF'. (Correct rotation shown in diagram)
5. Start pump slowly - check for leaks - gradually increase speed.

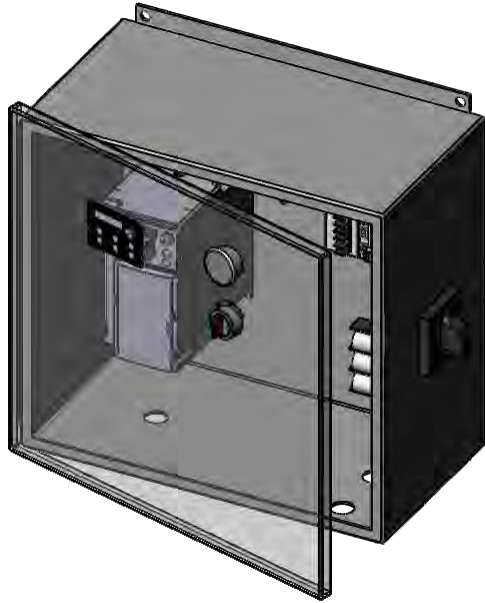
Relief Valve Operation:

The F_Pump can be built with an optional relief valve. The valve is built in the end housing as shown in the diagram.

If discharge pressure exceeds the acceptable limit, the fluid will compress the poppet valve, allowing the fluid to return to the vacuum side of the pump.



Flow Speed Control

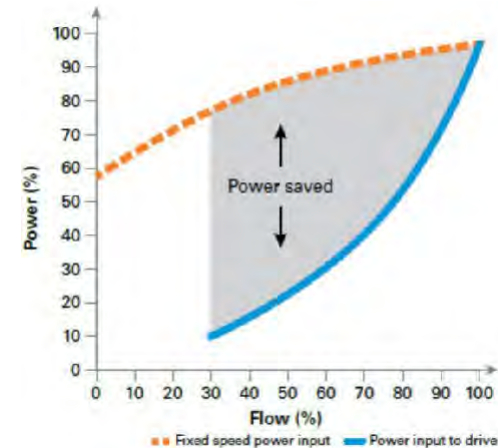


Flow Speed Control:

Pump speed control, either in the form of a Variable Frequency Drive (VFD) or hydraulic control valve is a valuable feature. Many factors can contribute to a situation where pump speed would need to be decreased for cautionary reason, or increased for efficiency gains. These controls have other built in features such as motor protection and pressure control. They also provide valuable information when trouble shooting. Without control, one is left with limited options when problems occur. This can lead to damage, shortened life, or compromised safety.

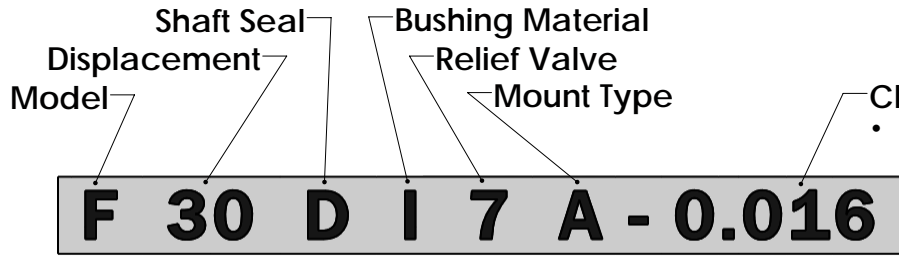
Energy Savings from a VFD

The graph to the right shows the energy comparison of Fixed Speed* with a VFD. Initially, fixed speed would certainly be the least expensive. However, energy savings should be considered during the cost analysis. At some point this alone would cover the cost.



*Fixed Speed; Not everyone will choose some type of speed control. As a cautionary measure, we advise all fixed drive systems start at a reduced speed. This should be as much as 50% below the pumps maximum. At initial start-up, this slower speed is more forgiving when conditions are not as expected. Once the issues are corrected, the motor pulley can be replaced with a larger pulley to increase speed as conditions allow.

Model Number



Clearance

- Factory Set

Relief Valve

- A = Anode Plug (No Relief)
- 7 = #70 Relief Setting

Model

- F = Pump (Steel)
- FA = Pump (Aluminum)
- M = Meter
- R = Rebuild Kit

Bushing Material

- I = Iron Bushing
- B = Bronze Bushing
- S = Hardened Steel

Displacement

- 04 = .004 Gal/Rev
- 07 = .007 Gal/Rev
- 15 = .015 Gal/Rev
- 30 = .030 Gal/Rev

Mount Type (Face)

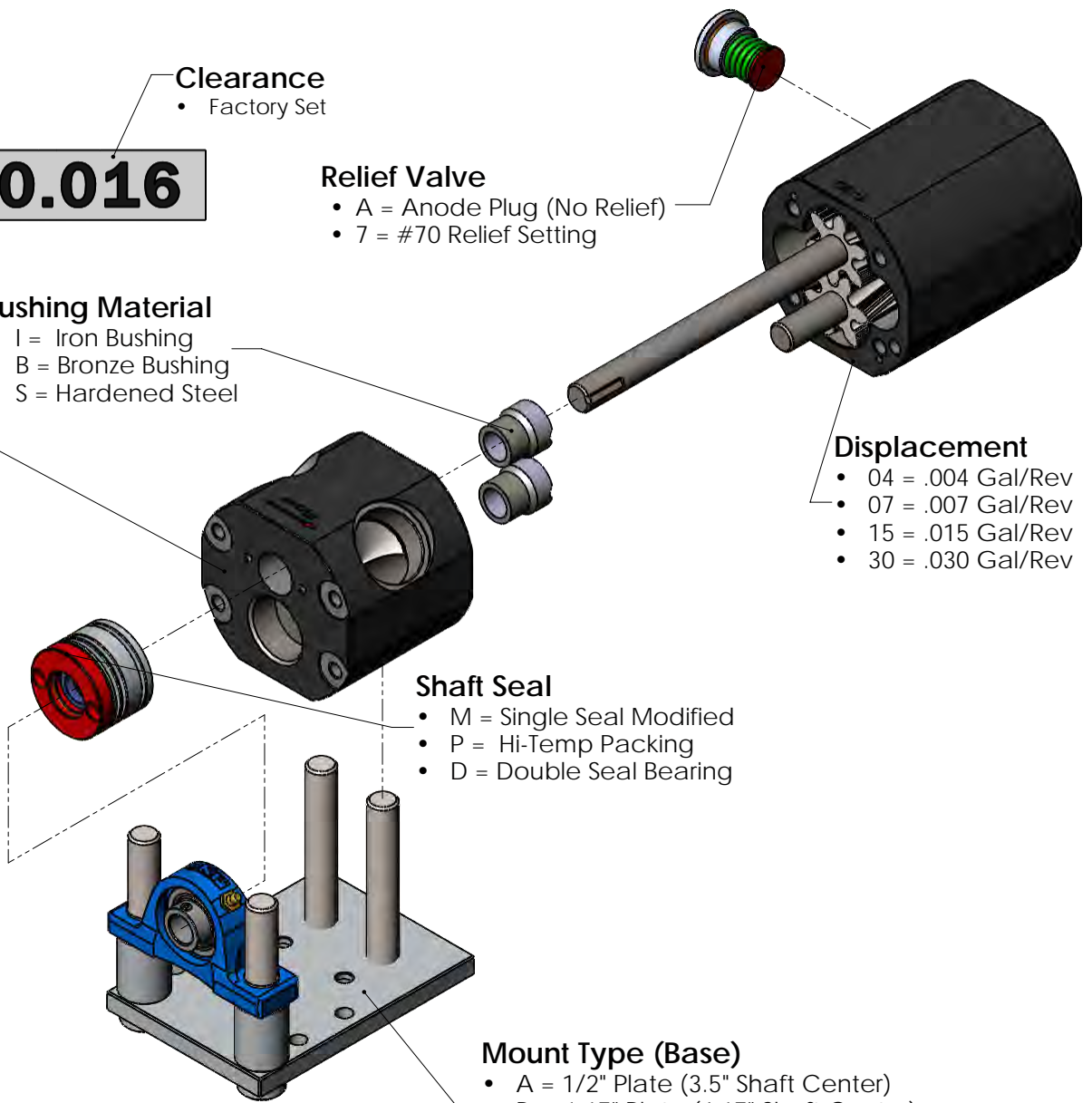
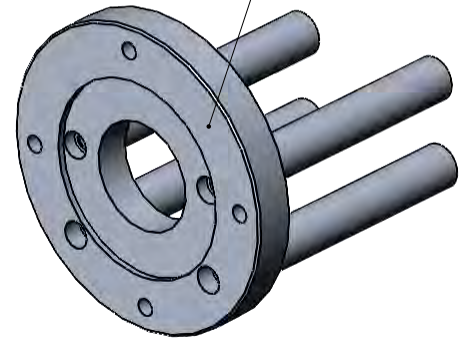
- K = 145TC Face
- L = 185TC Face
- M = 4F-17 Hydraulic
- N = SAE AA 4-Bolt Hydraulic
- P = Meter Encoder

Shaft Seal

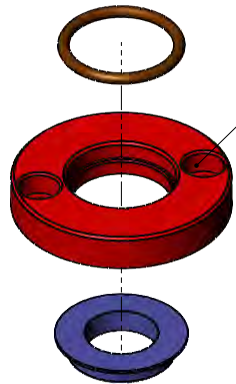
- M = Single Seal Modified
- P = Hi-Temp Packing
- D = Double Seal Bearing

Mount Type (Base)

- A = 1/2" Plate (3.5" Shaft Center)
- B = 1.17" Plate (4.17" Shaft Center)
- C = 0.543 Plate (90mm Shaft Center)
- D = 1-1/2" Plate (4.5" Shaft Center)



Option Selection



M = Modified Lip Seal
 Basic Seal design. Low Maintenance. Good choice for Low to medium pressure, pumping material with good lubricating properties.

- 375°F
- Lip Seal



Relief Valve Selection

- **A** = Anode
- **7** = HIGH Pressure

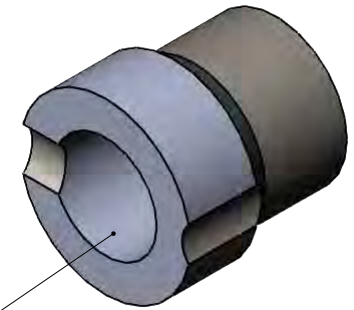
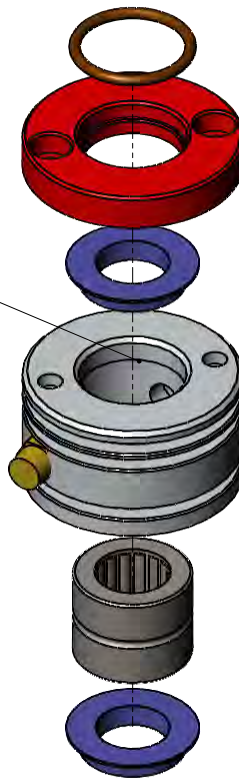
Relief pressure is a function of flowrate, actual PSI will vary.

The ANODE option is a blocked Relief passage (NO relief). The cover of the relief is replaced with an aluminum anode. This option is used primarily in salt water applications.

D = Double Seal Bearing

Excellent all-around seal design. Best choice for High temp, abrasion, or corrosive conditions. Excellent choice for viscous material requiring High Vacuum.

- 550°F
- Grease-able Cavity
- Cooling Fins
- Double Seal
- Needle Bearing

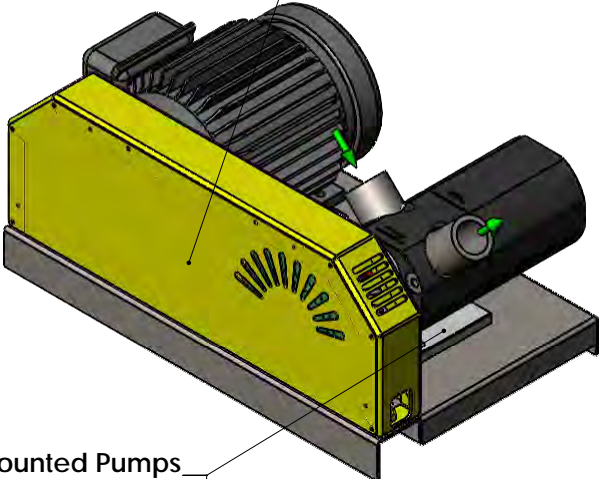


Bushing Selection

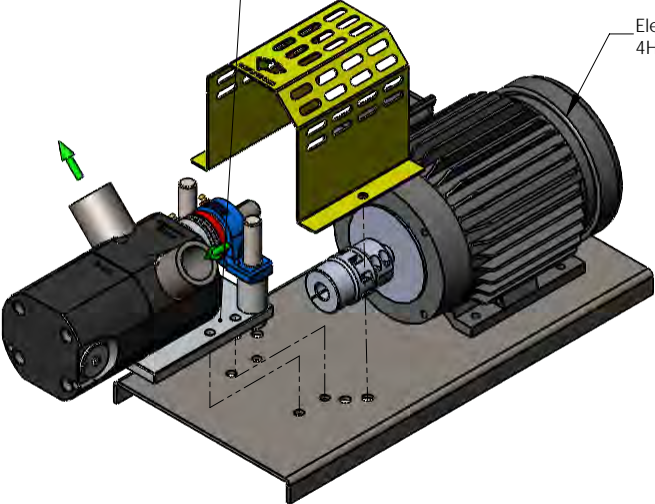
- **I** =Pearlitic Iron. Excellent lubricity. 700°F. Best choice for high temp.
- **B** =Aluminum Bronze. Good Lubricity. 500°F
- **S** =Hardened Steel. Good choice for low RPM, high abrasion applications

Motor Configurations

Base Type = BD

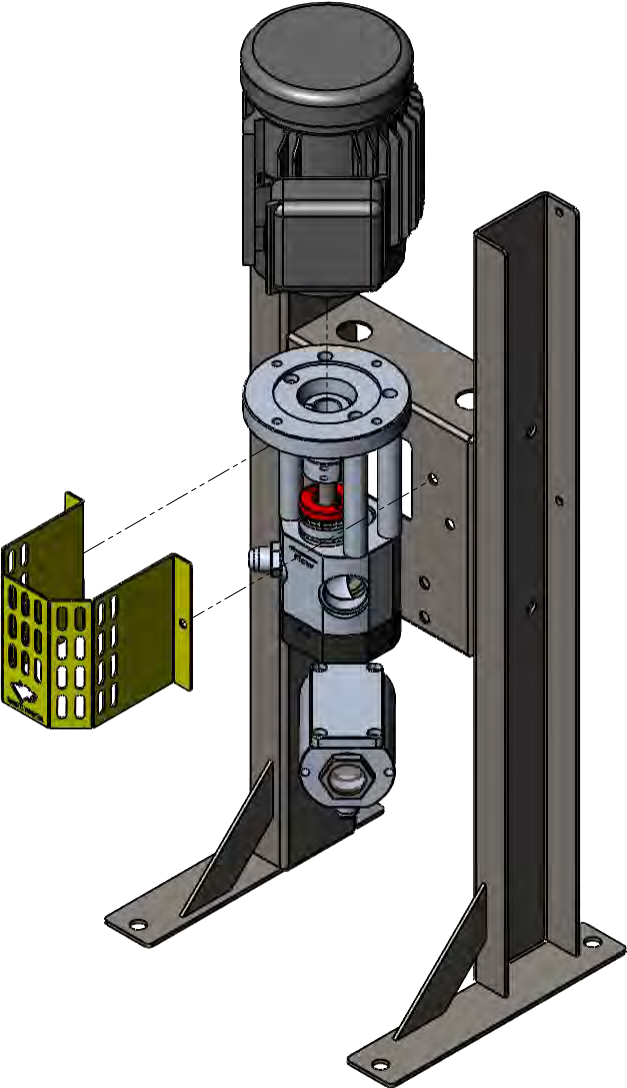


Base Mounted Pumps
Mount types 'A-F'



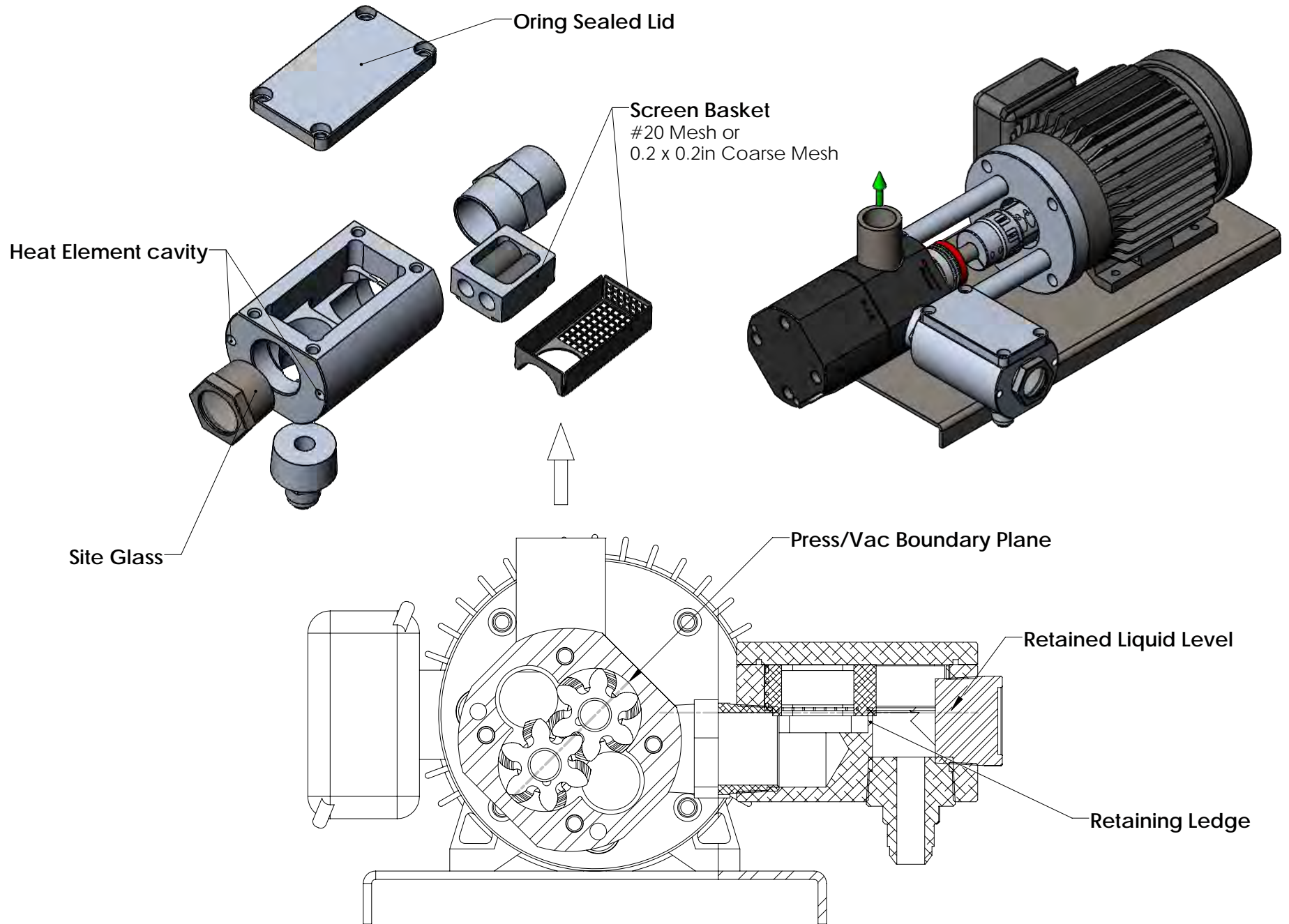
Electric Motor (shown)
4HP Gas Honda Motor also available

Base Mounted Pumps



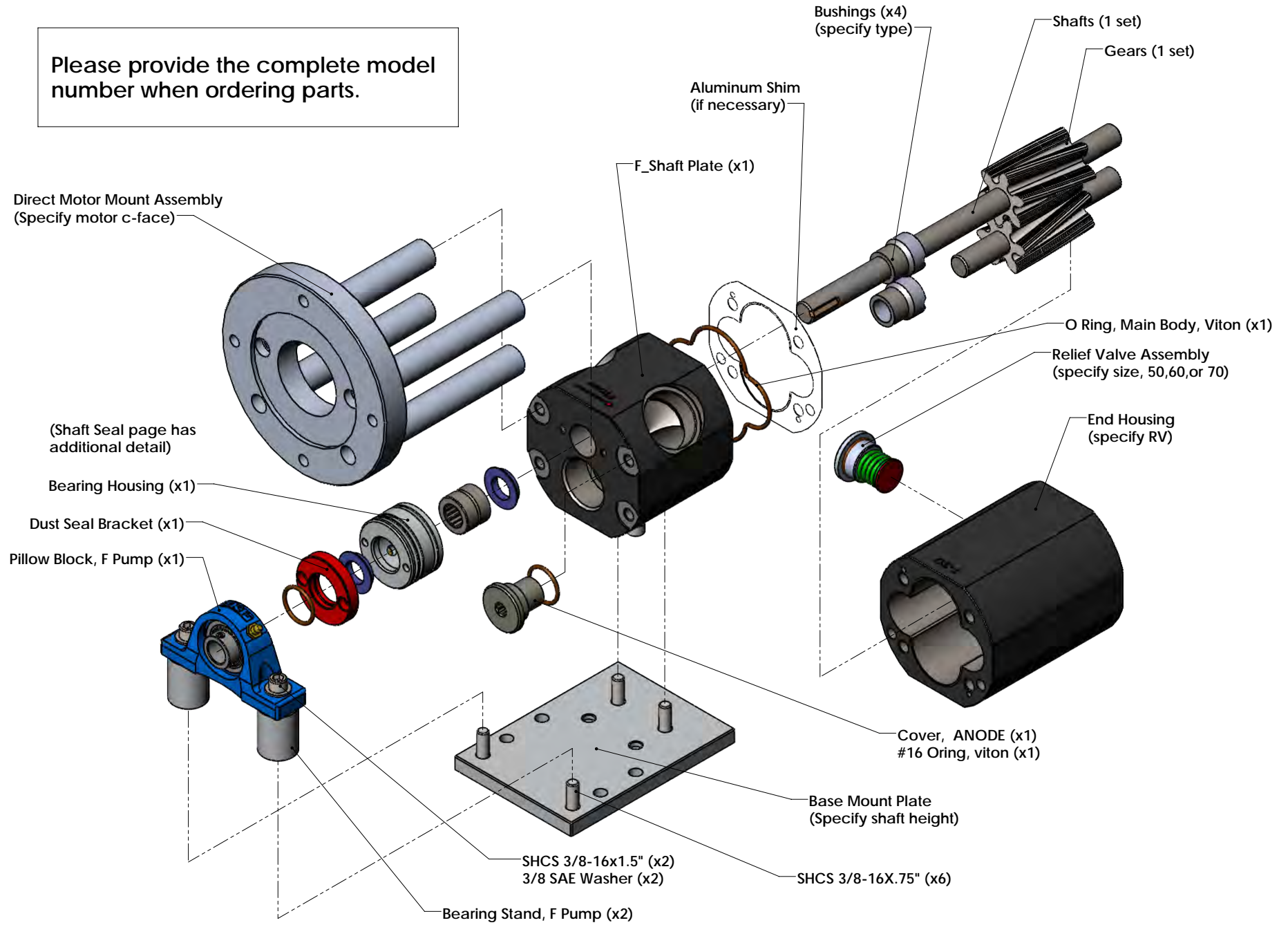
Face Mounted Pumps

Screen Box_Priming Chamber

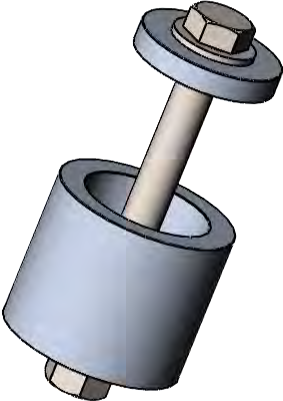
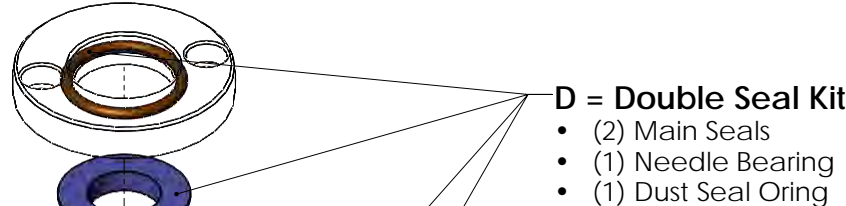


Parts Diagram

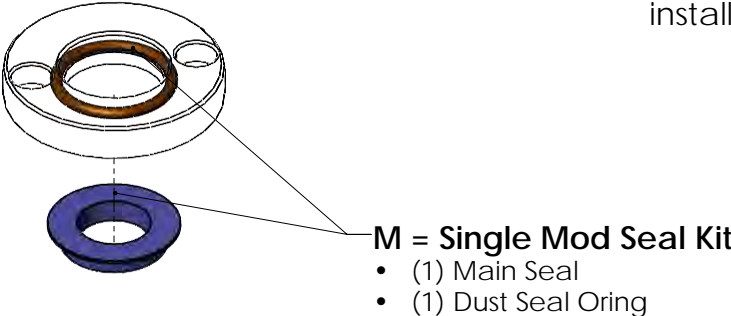
Please provide the complete model number when ordering parts.



Shaft Seal Kits



F-Pump Bushing and Seal Removal TOOL:
Bushings/Bearing/Seal removal and installation tool



Rebuild Kits

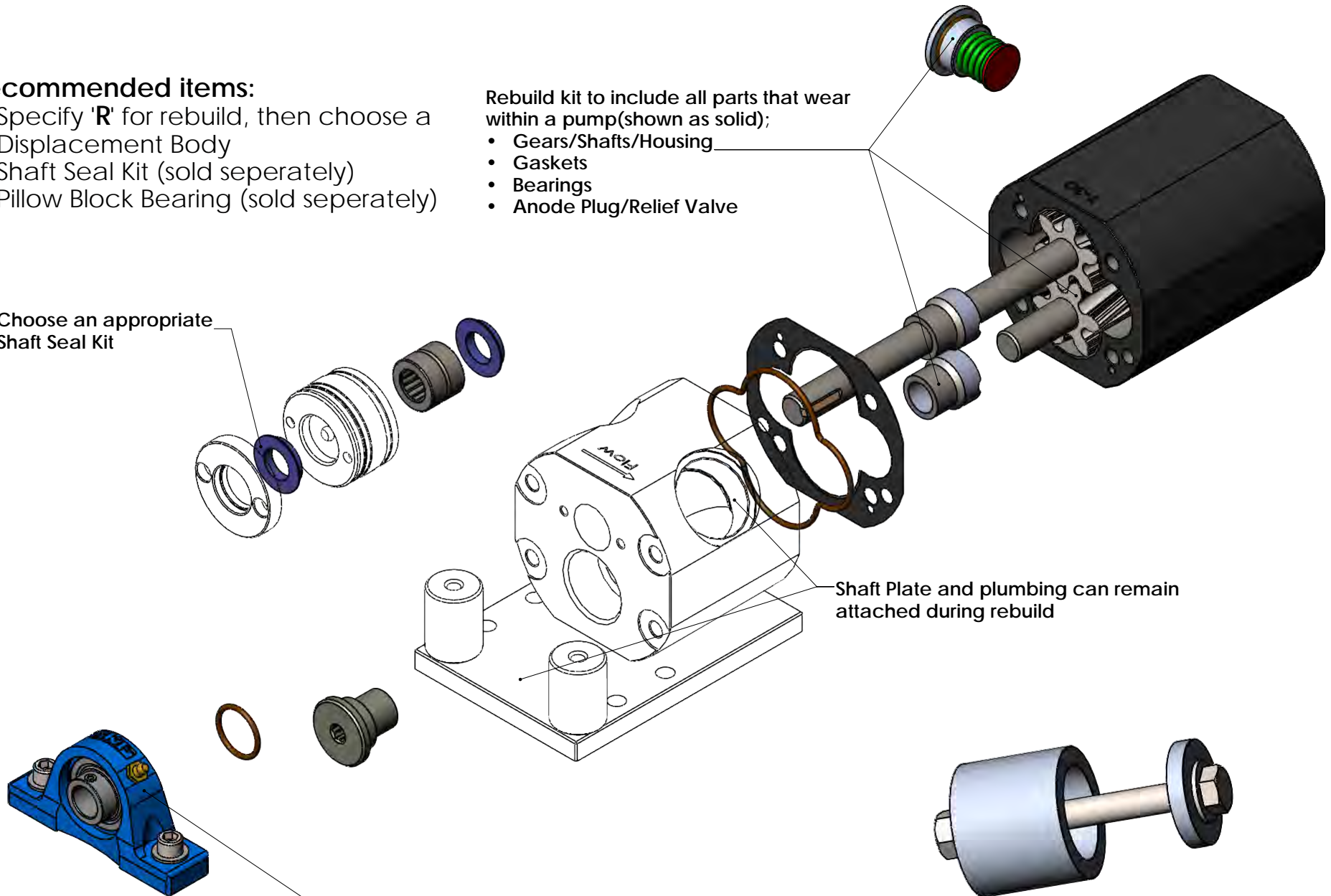
Recommended items:

- Specify 'R' for rebuild, then choose a Displacement Body
- Shaft Seal Kit (sold separately)
- Pillow Block Bearing (sold separately)

Rebuild kit to include all parts that wear within a pump (shown as solid);

- Gears/Shafts/Housing
- Gaskets
- Bearings
- Anode Plug/Relief Valve

Choose an appropriate Shaft Seal Kit



Shaft Plate and plumbing can remain attached during rebuild

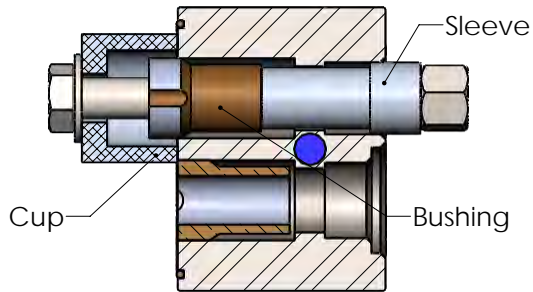
Order Pillow Block Bearing (if needed)

F-Pump bushing removal TOOL:
Bushings/Bearing removal and installation tool

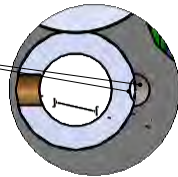
Rebuild, Bushing Removal

Bushing Removal and Installation

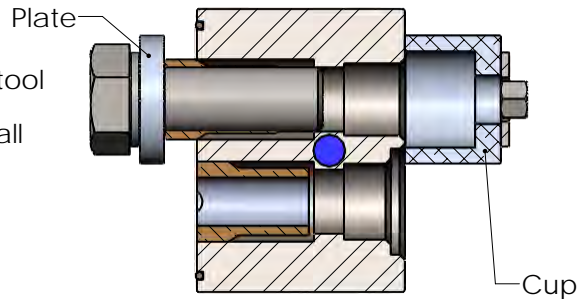
1) Use Rebuild tool as shown in drawing to remove both bushings



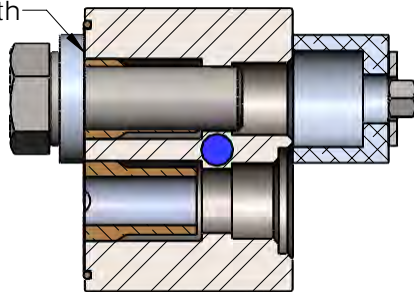
2) Align lubrication slot on bushing with feed chamfer on housing face



3) Use Rebuild tool as shown in drawing to install both bushings.

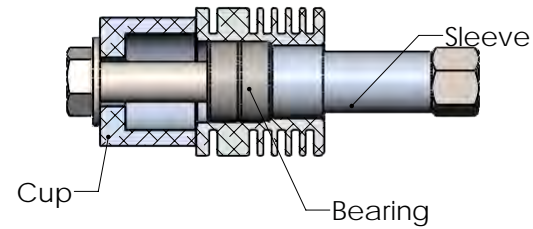


4) Bushing face should be flush with housing face.

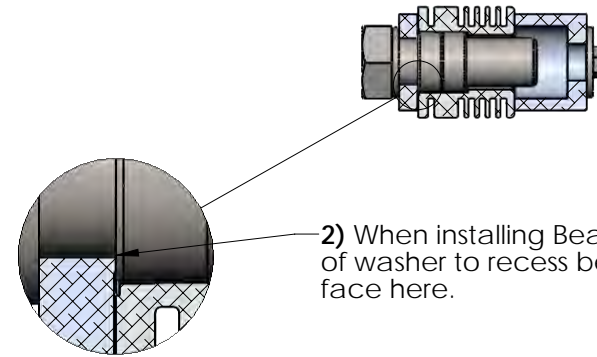


Needle Bearing

1) Use Rebuild tool as shown in drawing to remove bearing

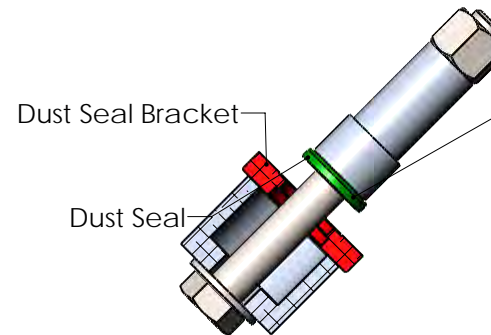


2) When installing Bearing, use piloted side of washer to recess bearing .01" below face here.



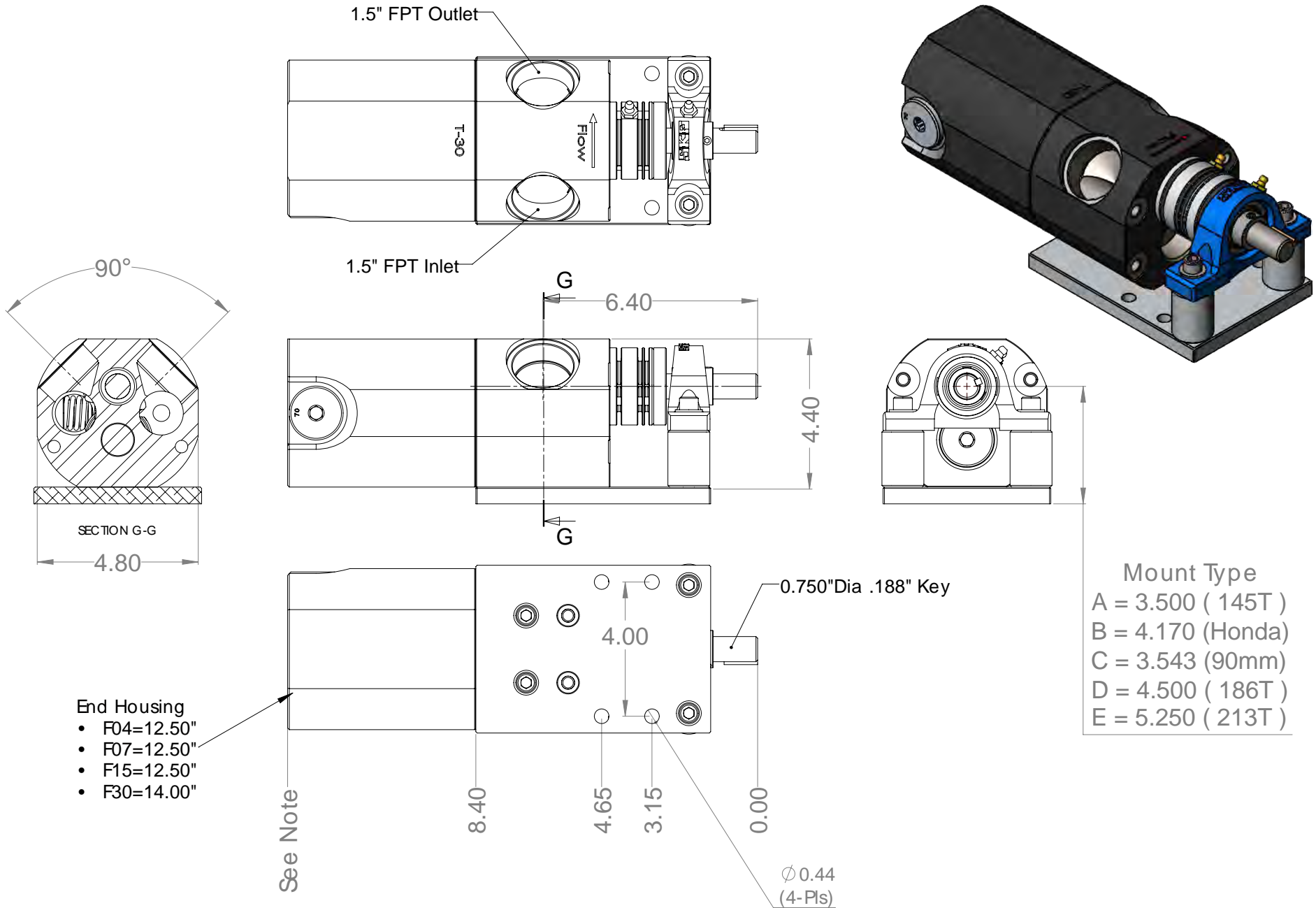
Dust Seal Removal

1) Use the same method to remove and replace dust seal

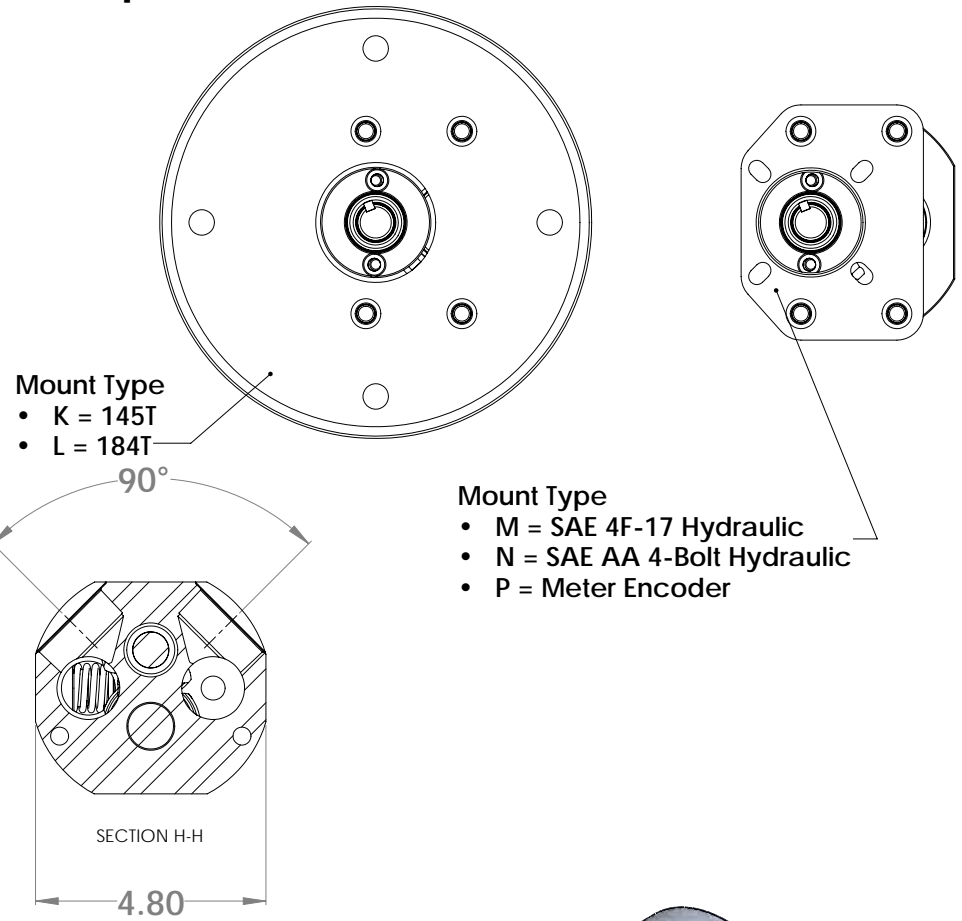
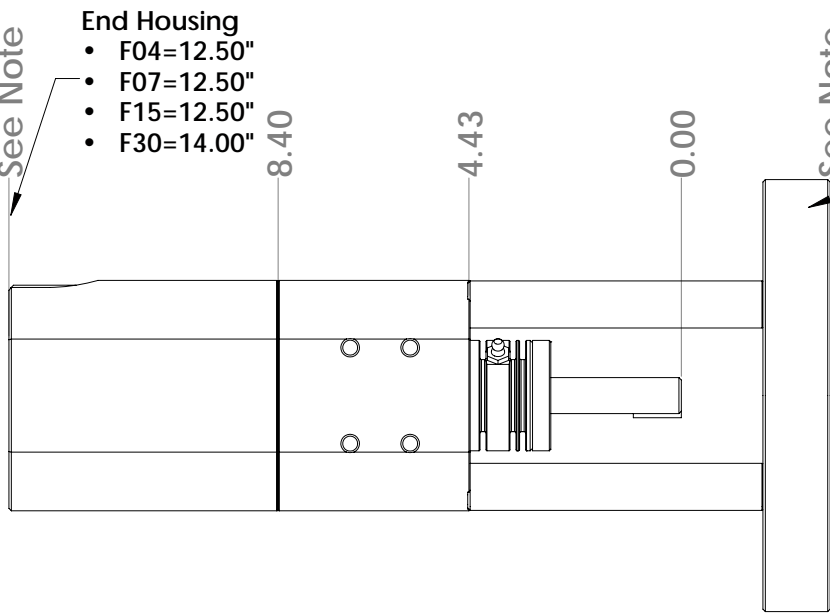
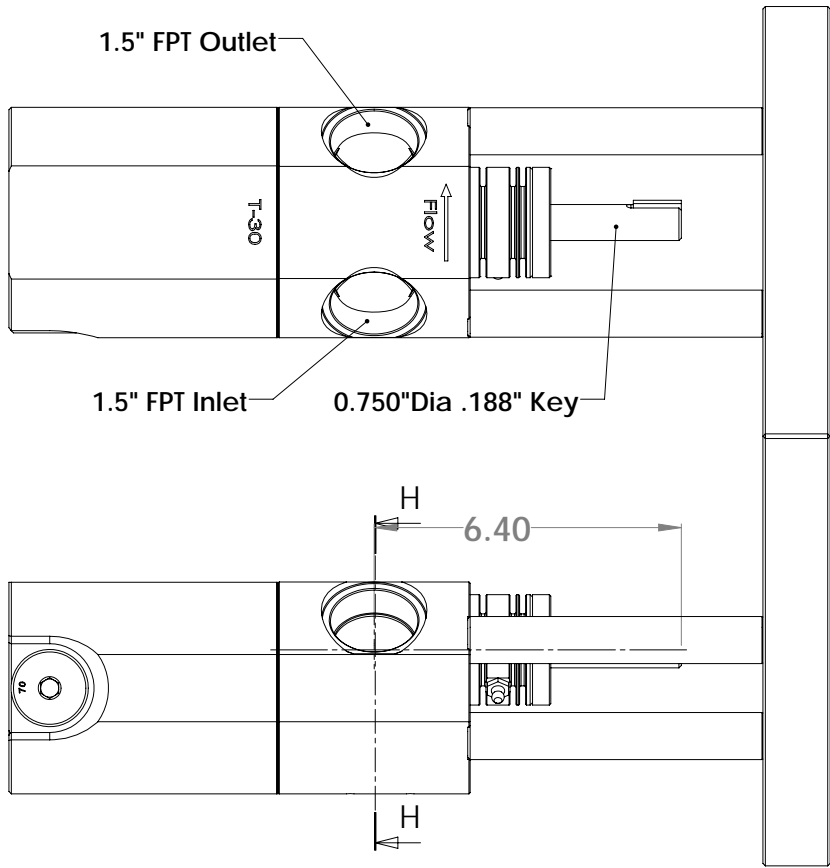


Tip: When installing dust seal, Tighten until it bottoms out, No need to recess as done in above with needle bearing

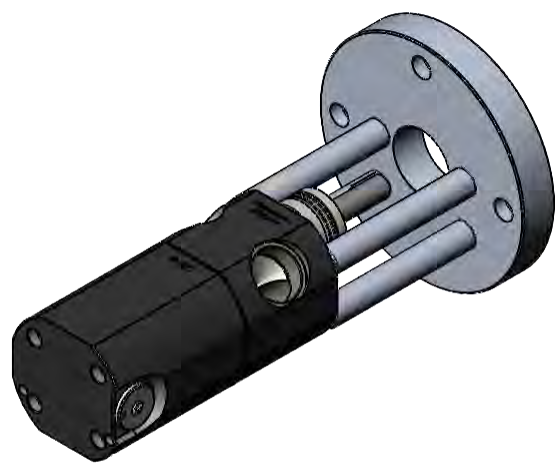
Base Mount, F_Pump Dimensions



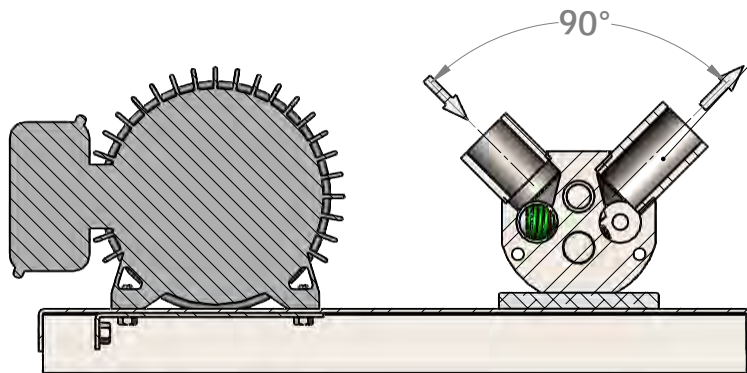
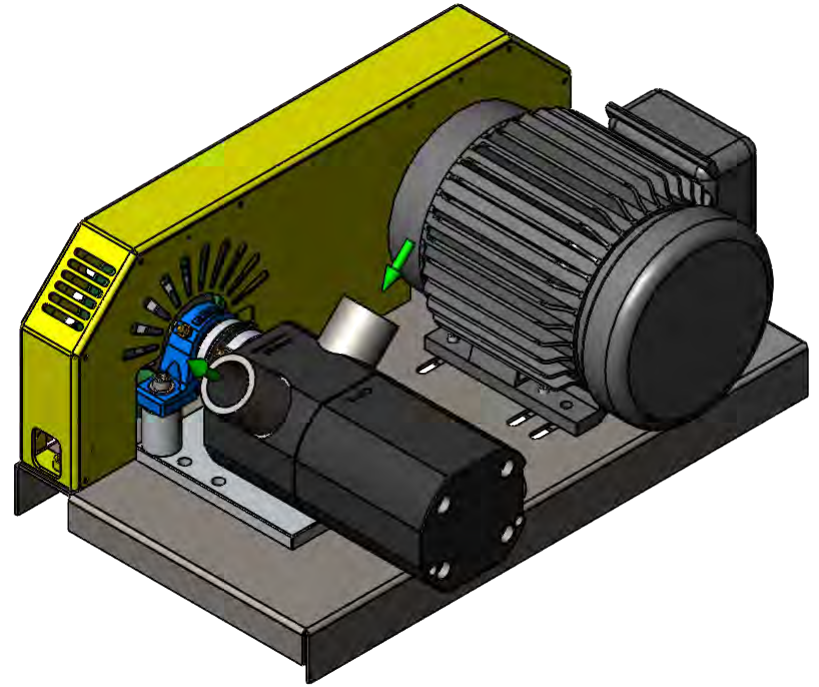
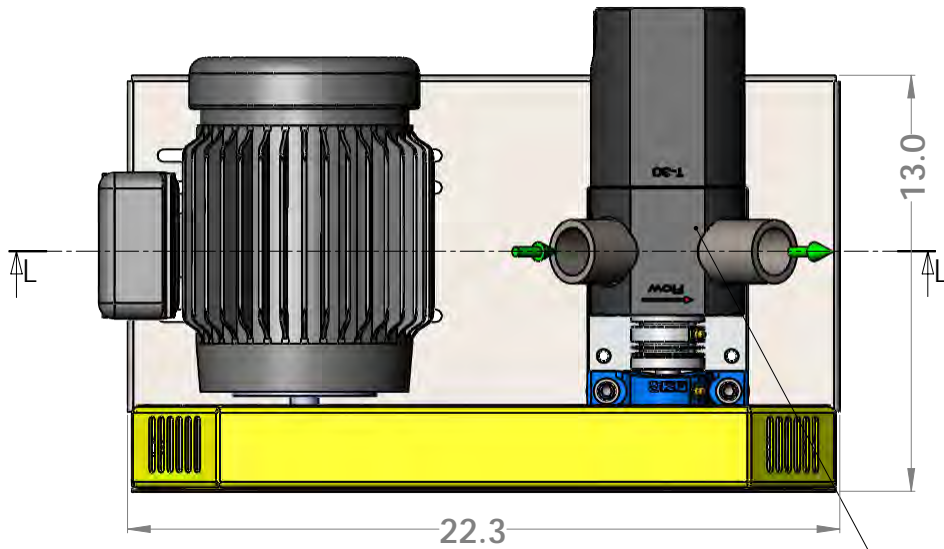
Face Mount, F_Pump Dimensions



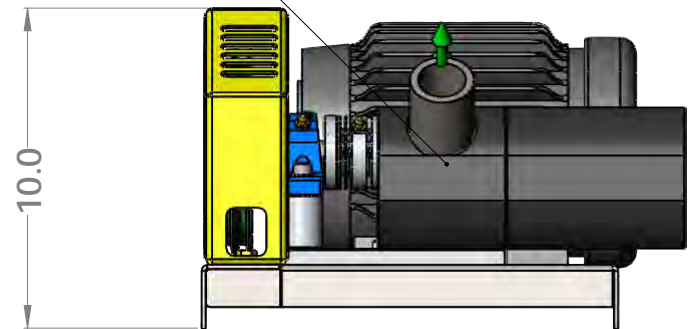
- Mount Type
- K = 2.65"
 - L = 3.40"
 - M = 1.70"
 - N = 1.70"
 - P = 1.70"



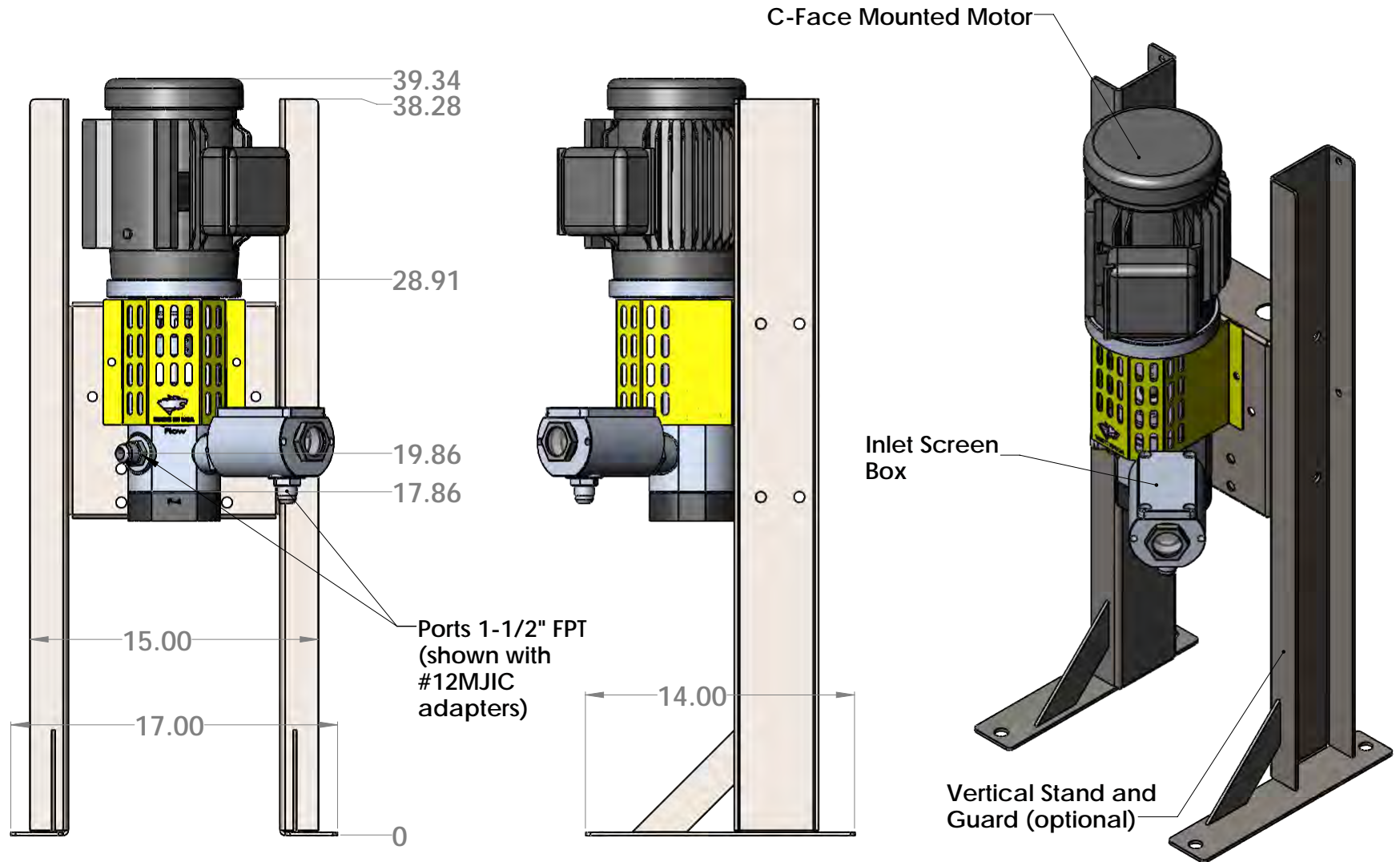
Belt Drive Skid Dimensions



Pipe Shown for display purpose. Ports are 1.5" FPT

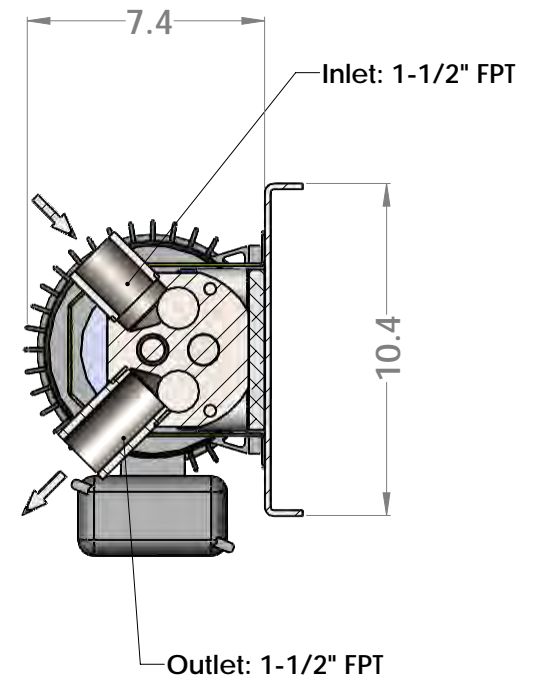
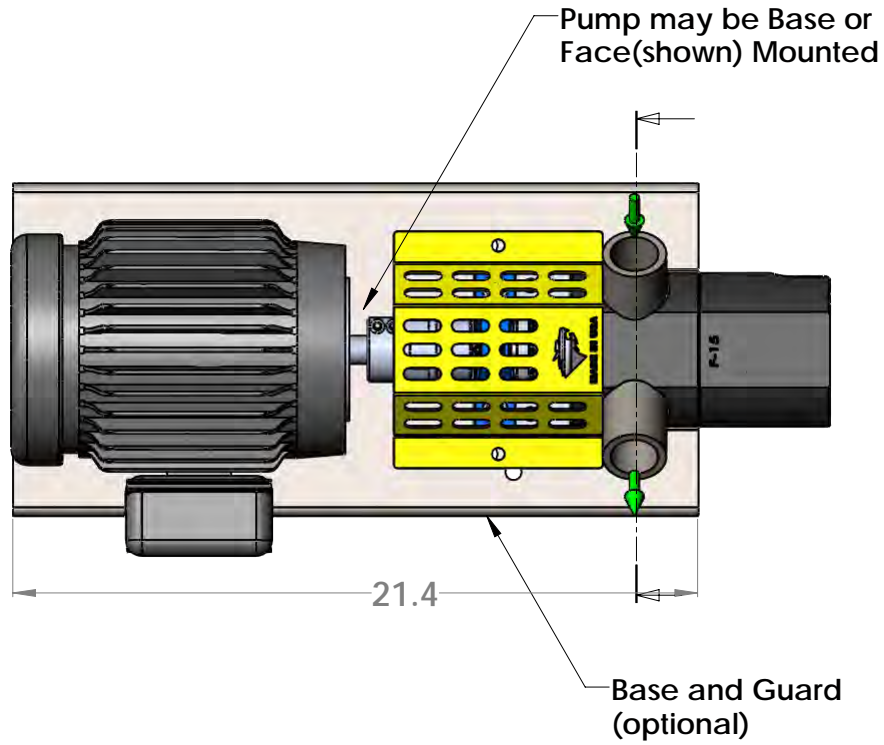


Vertical Pump, C-Face



Direct Couple Skid Dim, Base

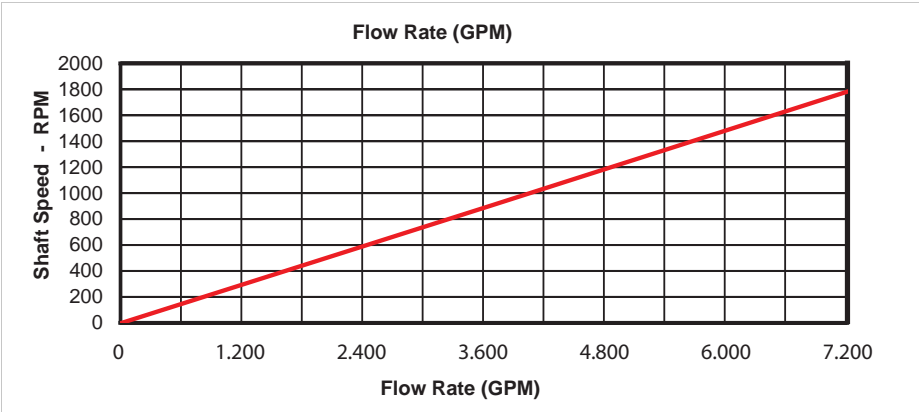
Base mounted pump



04-07 Curves

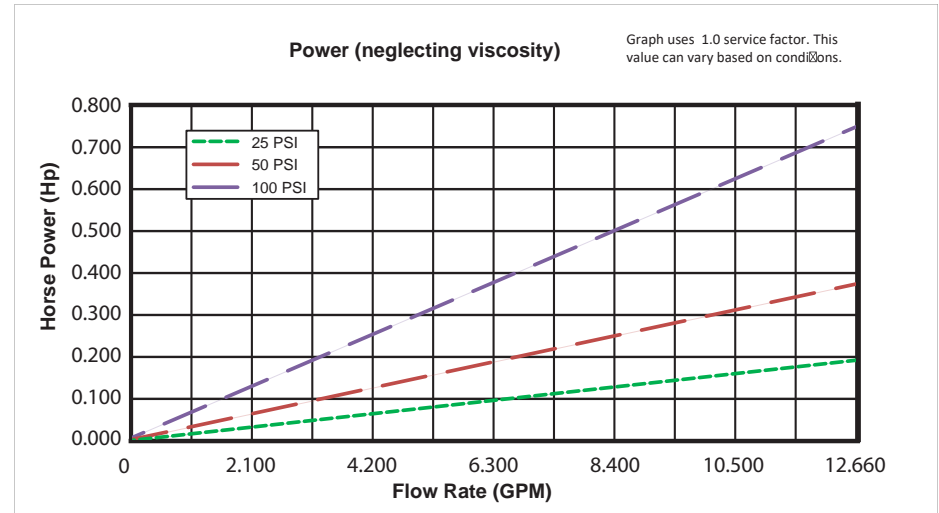
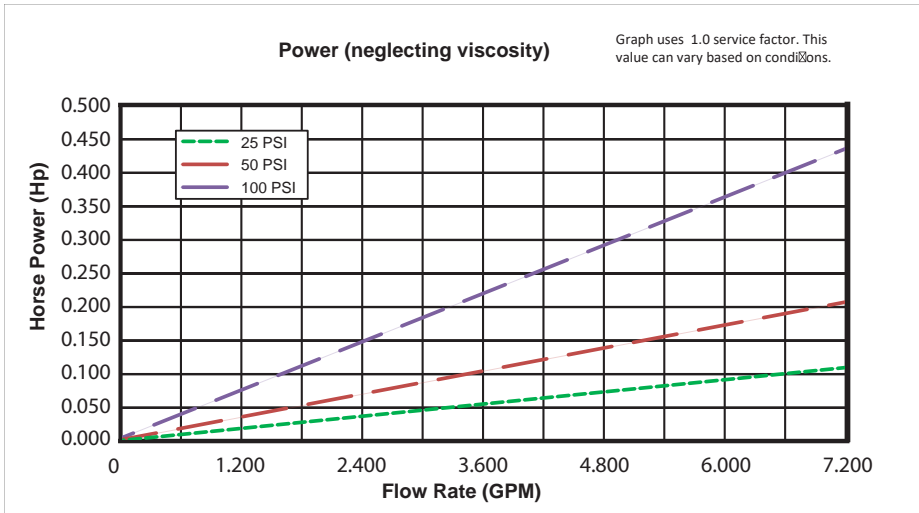
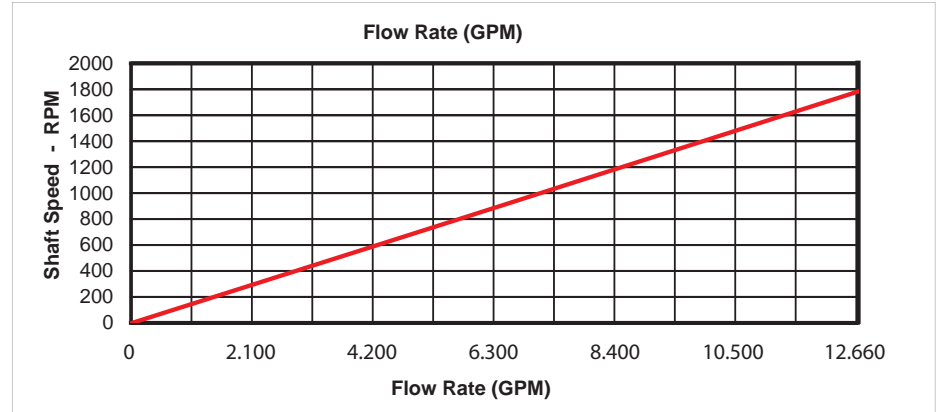
04

Pump Disp. **4.00**
 Max RPM 1800
 Max GPM 7.2
 Port Size 1.5in FPT



07

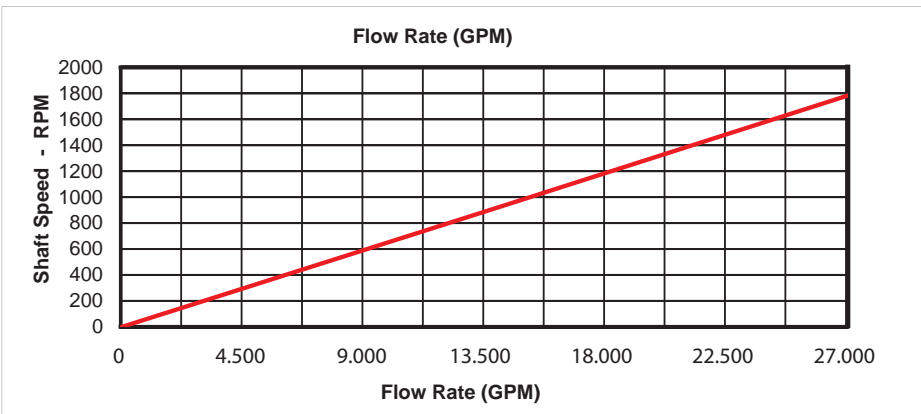
Pump Disp. **7.00**
 Max RPM 1800
 Max GPM 12.6
 Port Size 1.5in FPT



15-30 Curves

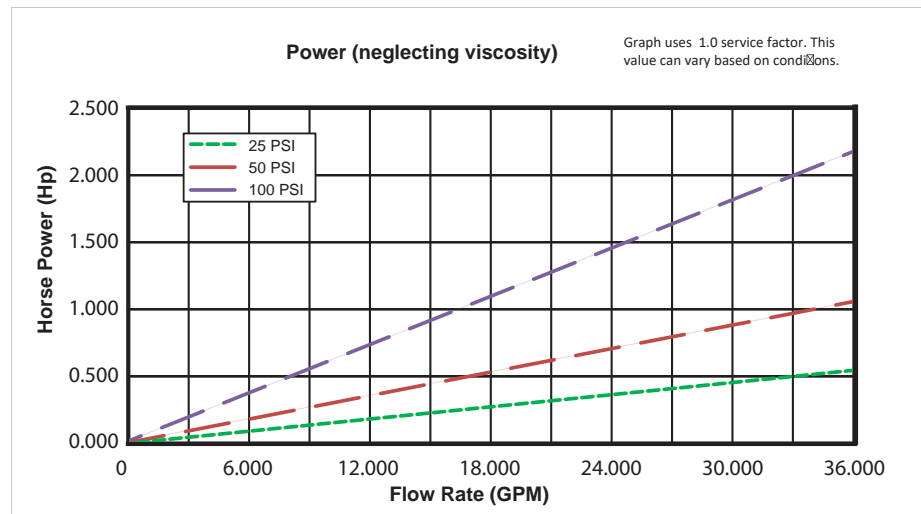
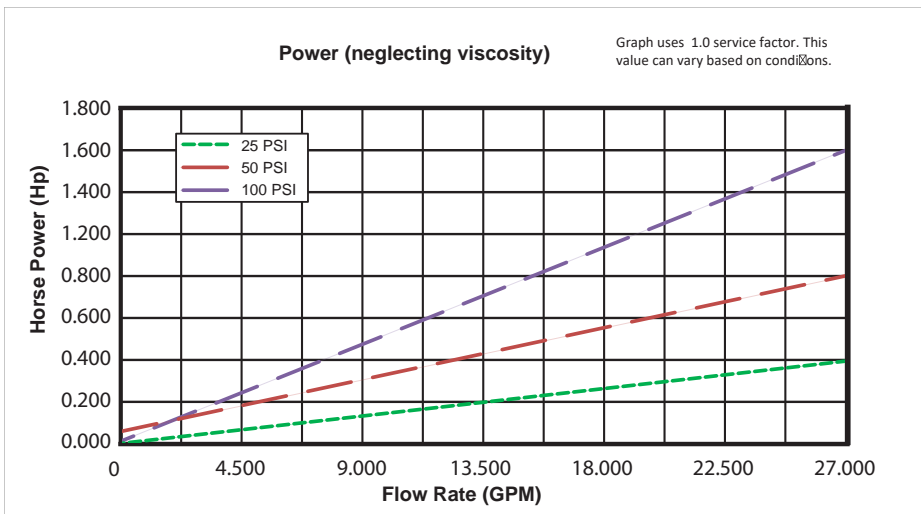
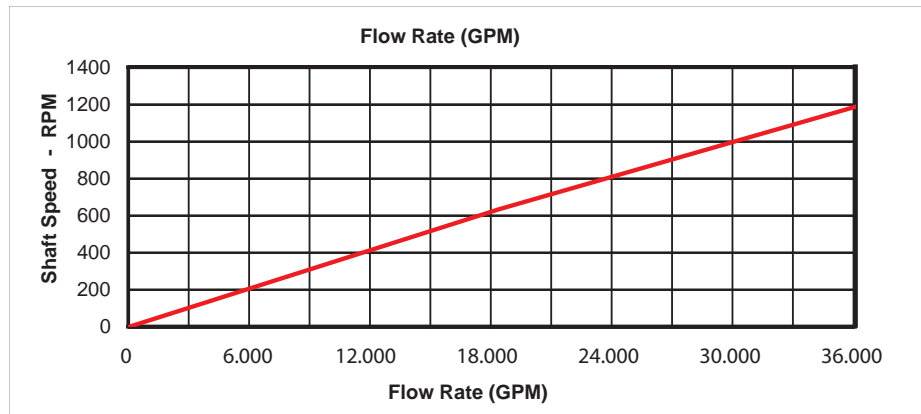
15

Pump Disp. **15.00**
 Max RPM 1800
 Max GPM 27
 Port Size 1.5in FPT

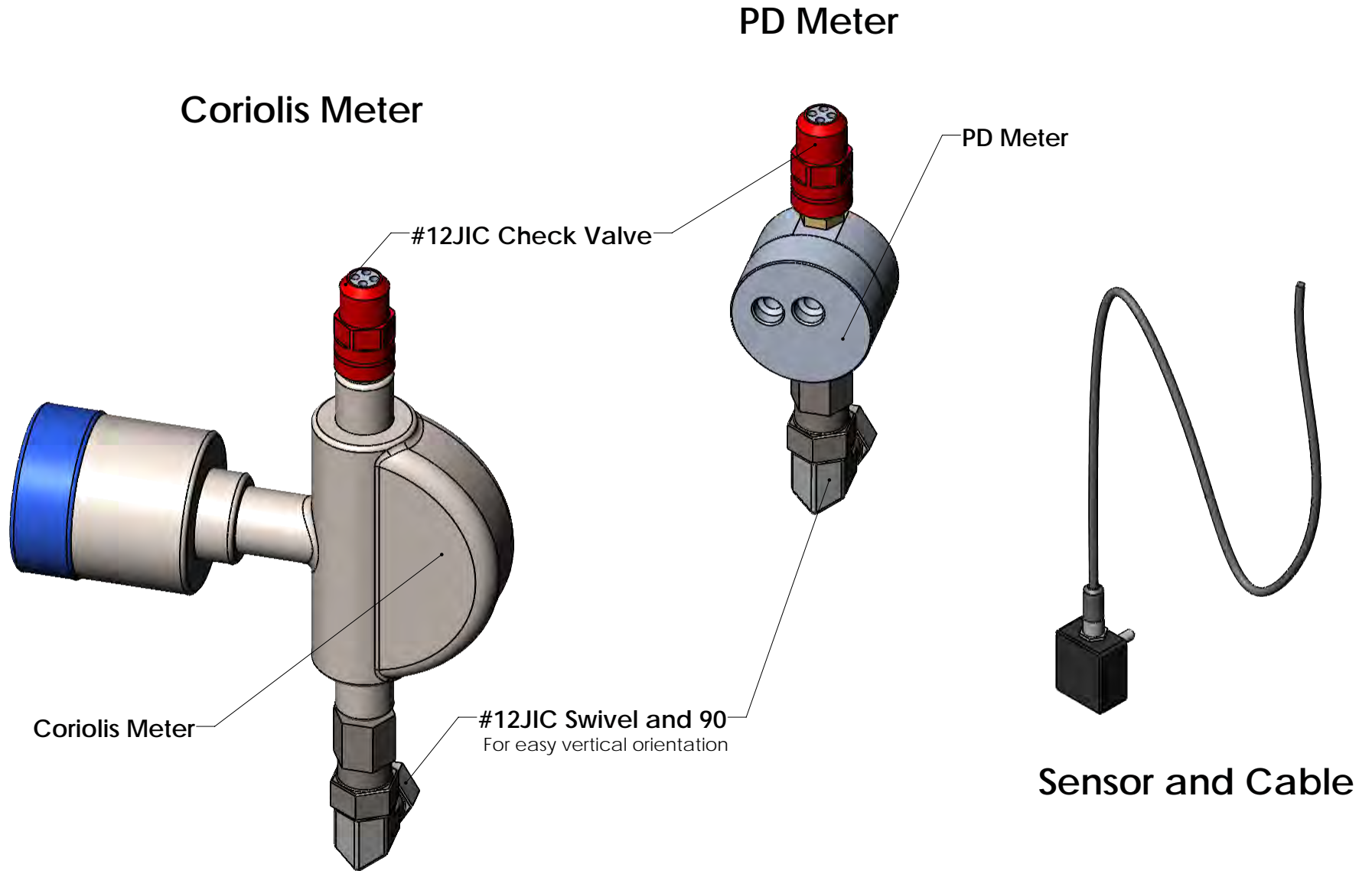


30

Pump Disp. **30.0**
 Max RPM 1200
 Max GPM 36
 Port Size 1.5in FPT



F-Pump Meter Assemblies



F-Pump Accessories

Sample Valve Assembly:

- #12 JIC
- SS Valve



Gauge Assembly:

- #12 JIC
- Pressure or Vacuum available



Injection Assembly:

- #12 JIC
- Vertical Check Valve
- J-Tube Back Flow Seal

