



B-SERIES

BUSHING STYLE PUMPS

BearCat Pumps are external gear, positive displacement pumps designed specifically for the Oil & Gas Industry.



Model: 600B

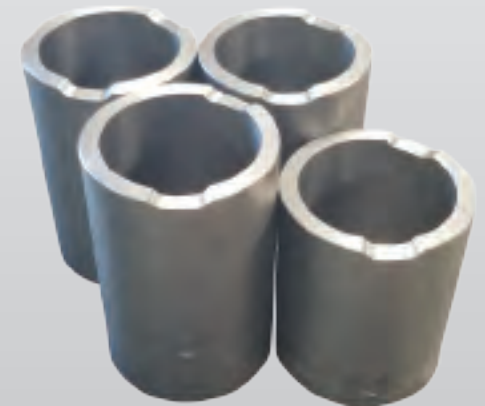
FEATURES & BENEFITS

- NO LEAK SEAL - EASY Change Out
- 4" Model up to 11 BARRELS/MINUTE
- Added Shaft Support from Needle Bearing in Seal Housing
- Bushing Lubrication Passages
- PTO, Hydraulic Drive or Belt Skid
- Flanged Ports
- Multiple Port Configurations
- Bi-directional Relief Valves

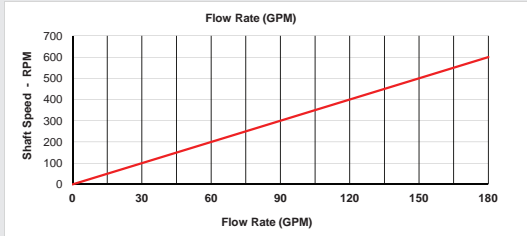
MATERIALS OF CONSTRUCTION



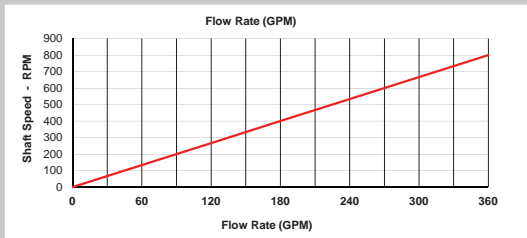
HOUSING:	Cast Iron
GEARS:	Heat Treated Steel, Helical Shape
BUSHINGS:	Pearlitic Iron
SEAL:	Dual Lip Seal
PRESSURE RELIEF:	Bi-directional
PORT SIZE OPTIONS:	2.5", 3", 4"



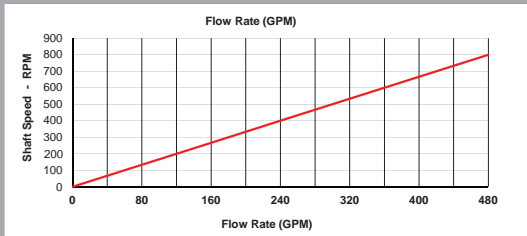
Pump Disp **300** Max RPM 600
 Port Size 2.5in ANSI 150# Flange Max GPM 180



Pump Disp **450** Max RPM 800
 Port Size 3in Pump Flange* Max GPM 360
* Bolt circle on flange is ANSI 3in 150#
 * Port adapters available for 4in ANSI 150#, 8-bolt



Pump Disp **600** Max RPM 800
 Port Size 4in Pump Flange* Max GPM 480
* Bolt circle on flange is ANSI 3in 150#
 * Port adapters available for 4in ANSI 150#, 8-bolt



Green Pump Systems, LLC

928-231-2027

egreen@greenpumps.com



B-SERIES
 BUSHING STYLE PUMPS

