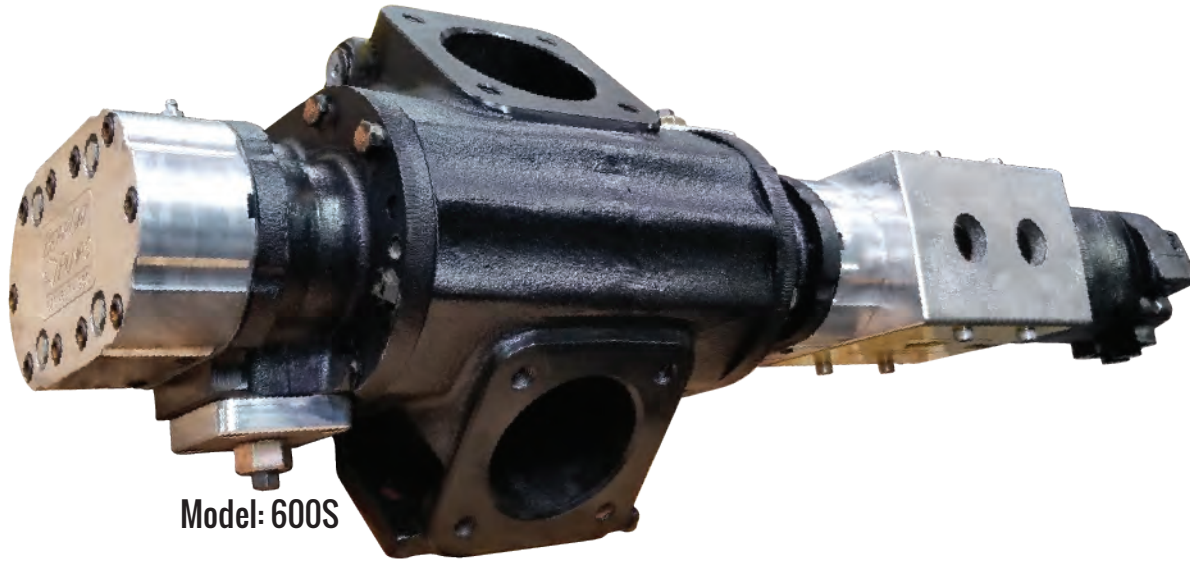




# S-SERIES

SEALED BEARING PUMPS

BearCat Pumps are external gear, positive displacement pumps designed specifically for the Oil & Gas Industry.



Model: 600S

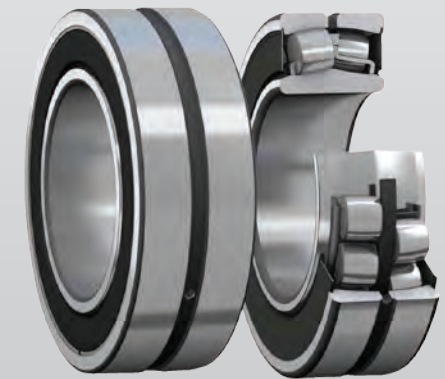
## FEATURES & BENEFITS

- **NO LEAK SEAL - EASY** Change Out
- 4" Model up to 11 BARRELS/MINUTE
- Sealed Bearings, Rugged
- Holds up to Caustic Materials Including Water, Chemicals, & Crude Oil
- PTO, Hydraulic Drive or Belt Skid
- Flanged Ports
- Multiple Port Configurations
- Bi-directional Relief Valves

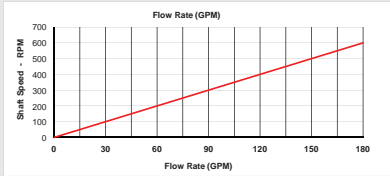
## MATERIALS OF CONSTRUCTION



|                    |                                   |
|--------------------|-----------------------------------|
| HOUSING:           | Cast Iron                         |
| GEARS:             | Heat Treated Steel, Helical Shape |
| BEARINGS:          | Sealed Spherical Roller Bearing   |
| SEAL:              | Dual Lip Seal                     |
| PRESSURE RELIEF:   | Bi-directional                    |
| PORT SIZE OPTIONS: | 2.5", 3", 4", 6"                  |

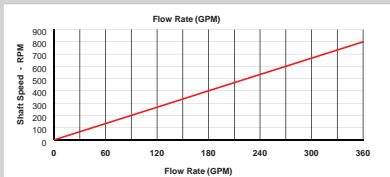


Pump Disp **300** Max RPM 600  
 Port Size 2.5in ANSI 150# Flange Max GPM 180



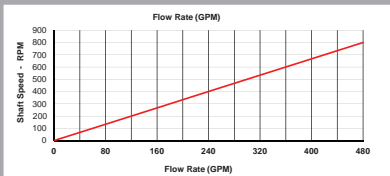
Pump Disp **450** Max RPM 800  
 Port Size 3in Pump Flange\* Max GPM 360

\*Bolt circle on flange is ANSI 3in 150#  
 \*Port adapters available for 4in ANSI 150#, 8-bolt



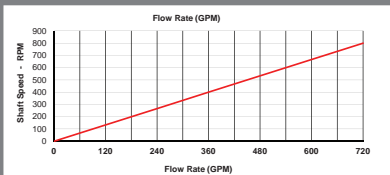
Pump Disp **600** Max RPM 800  
 Port Size 4in Pump Flange\* Max GPM 480

\*Bolt circle on flange is ANSI 3in 150#  
 \*Port adapters available for 4in ANSI 150#, 8-bolt



Pump Disp **900** Max RPM 800  
 Port Size 6in Pump Flange\* Max GPM 720

\*Bolt circle on flange is ANSI 6in 150#



Green Pump Systems, LLC

928-231-2027

egreen@greenpumps.com



**S-SERIES**  
 SEALED BEARING PUMPS

